

Climate Disadvantage: The Climate Just tool

Rachel Walters
Environment Agency

Climate Just

- ➔ Introducing the Climate Just tool
- ➔ Explore what the tool contains
- ➔ Look at maps
- ➔ Examples of maps you can produce
- ➔ Q and A session

The Climate Just tool



Climate Just

Key questions ? Map tool Search the site

Home About Resources Case studies FAQs News Glossary Contact

Why are some people more vulnerable to climate change than others, where are they and what can be done?

We'd like to know what you think of this website – how easy is it to use and how much does it help? Please complete our short questionnaire

Climate Just

Key questions ?

Who is vulnerable?	Which places are disadvantaged?	What actions support resilience?	Map tool: see how your area is affected
Why does climate justice matter?	Which households emit the most carbon?	What can be done to tackle fuel poverty?	Who needs to do what?

Welcome to the Climate Just web tool

Climate change has the potential to increase inequalities and disadvantage in the UK. Local authorities and other organisations working on climate change, or working with vulnerable communities, have a key role to play in responding to this challenge. This website has been developed to provide evidence to support local action.

- It highlights which people and places are likely to be most vulnerable to the impacts of extreme weather, including flooding and extreme heat, and the areas which might be most affected.
- It also examines fuel poverty and inequities in energy policy and how these

Exposure to climate hazard
+ social vulnerability
= climate disadvantage

The Climate Just tool

Who is vulnerable?

Climate impacts and extreme weather events can affect anyone, but some people have the potential to be more affected than others. How badly a person or group will be affected will depend not just on their exposure to the event, but on their social vulnerability – that is, how well they are able to cope with and respond to events like floods and heatwaves. People and communities experiencing multiple causes of vulnerability are the most extremely socially vulnerable.

The main drivers of social vulnerability relate to

- Personal features of the individual, such as age and health, which affect their sensitivity to climate impacts;
- Environmental characteristics, such as the availability of green space, quality of housing stock or elevation of buildings, which can increase or offset exposure to flooding or heat;
- Social and institutional context, such as levels of inequality and income, the strength of social networks, the cohesion of neighbourhoods and the day-to-day practices of institutions, such as care regimes in nursing homes, which affect people's ability to adapt.

More details about social vulnerability are provided in the **Overview** box below. More details about each vulnerable social group are given in the other boxes below.

Image of woman in flooded home © Environment Agency



Connections

OVERVIEW

Socially vulnerable groups sensitive to climate impacts



FIND OUT MORE

People on low incomes



FIND OUT MORE

People in poor health



The Climate Just tool



Key questions



Map tool



Search the site



Home

About

Resources

Case studies

FAQs

News

Glossary

Contact

People on low incomes

Section 1
Who are we concerned about?

Section 2
Why is it important to act?

Section 3
Where do people on low incomes tend to be located?

Section 4
What can be done?

Section 5
How can we do it?

Section 6
Further Resources

People on low incomes are less able to prepare for, respond to and recover from extreme weather events

References



Credit: JRF/Eloise Ross

On this page:

- [Introduction](#)

www.climatejust.org.uk

Map tool



Map tool



Intro Maps Help About Data download Copyright

The Climate Just Map Tool shows the geography of England's vulnerability to climate change at a neighbourhood scale. Its purpose is to support local planning and responses to a changing climate.

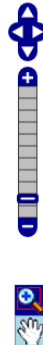
New updates added October 2015.

- Introduction
- Step 1: Displaying maps layers
- Step 2: Map navigation
- Step 3: How to use the maps
- Step 4: Interpreting the maps at the local scale

Download a [printable version](#) of the map layers available in the tool.

There's also a [printable version](#) of the full set of information sheets.

A full set of [local authority summary](#) indicator data is available as an Excel file.



Map navigation controls including close, refresh, full screen, and print icons.



Toggle map query on/off
 off
Search for a place

Surface Water disadvantage 1 in 30 years

Map Transparency: 60%

- Slight
- Extremely low
- Relatively low
- Average
- Relatively high
- Extremely high
- Acute

Indicators

Map tool

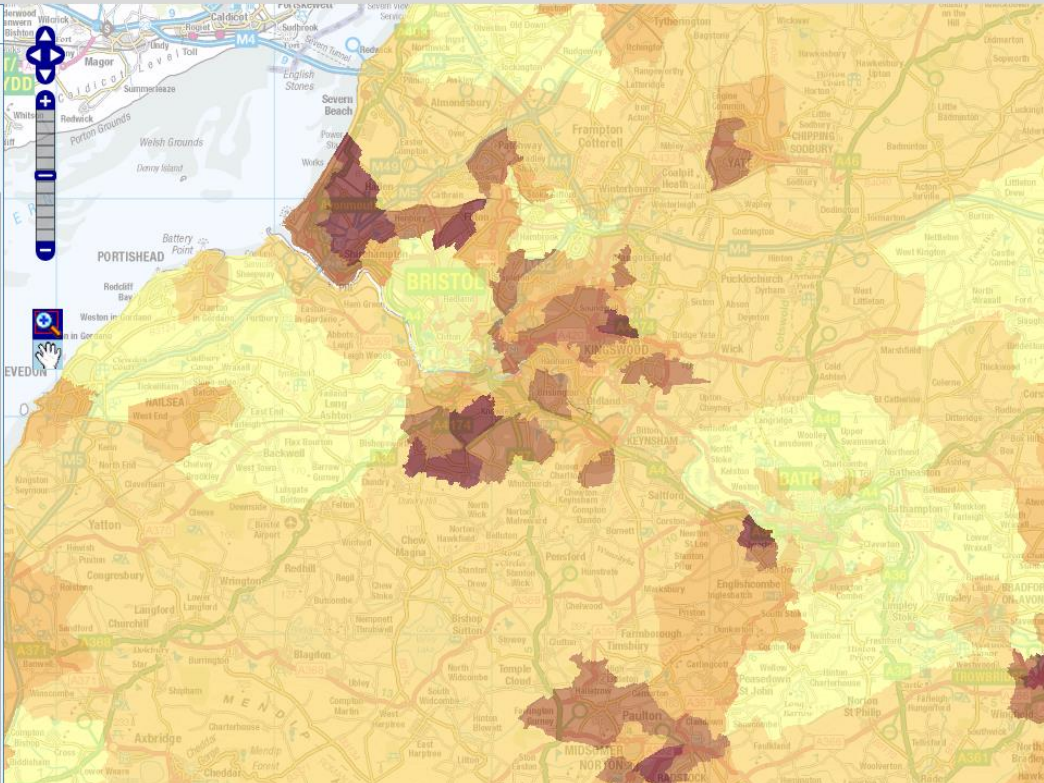


Intro Maps Help About Data download Copyright

Download a printable version of the map layers available in the tool. There's also a printable version of the full set of information sheets.

search for key word in the map menu

- Floding
 - Flood disadvantage (2011) info
 - River & coastal flood disadvantage info
 - Surface Water disadvantage info
 - Flood exposure (2011)
 - Environment Agency Flood Maps (current) info
 - Flood socio-spatial vulnerability (2011)
 - Flood vulnerability index info
 - Sensitivity info
 - Enhanced Exposure info
 - Ability to Prepare info
 - Inability to Prepare index
 - Income
 - Unemployment (% working population unemployed) info
 - Low income occupations (% in routine or semi-routine occupations) info
 - Long-term unemployed (% who are LTU or who have never worked) info
 - Households with dependent children and no adults in employment (%) info
 - Weekly household income estimate (E) info
 - All pensioner households (%) info
 - Tenure
 - Information Use (Language)
 - Local Knowledge



5 km
2 m

Toggle map query on/off
on

Search for a place

Search by postcode:

Go clear

Search by place name:

bristol

Go clear

refine selection

Low income occupations (% in routine or semi-routine occupations)

Map Transparency: 60%

3.2 - 15.77%
15.78 - 22.44%
22.45 - 29.2%
29.21 - 36.75%
36.76 - 54.34%

Creating your own maps



Map tool



[Intro](#) [Maps](#) [Help](#) [About](#) [Data download](#) [Copyright](#)

The data that powers the maps is available for download in Excel format or as a shapefile.

Shapefile format

If you have your own GIS software such as ArcGIS, MapInfo or the free [QGIS software](#) you can view and analyse the following shapefiles yourself

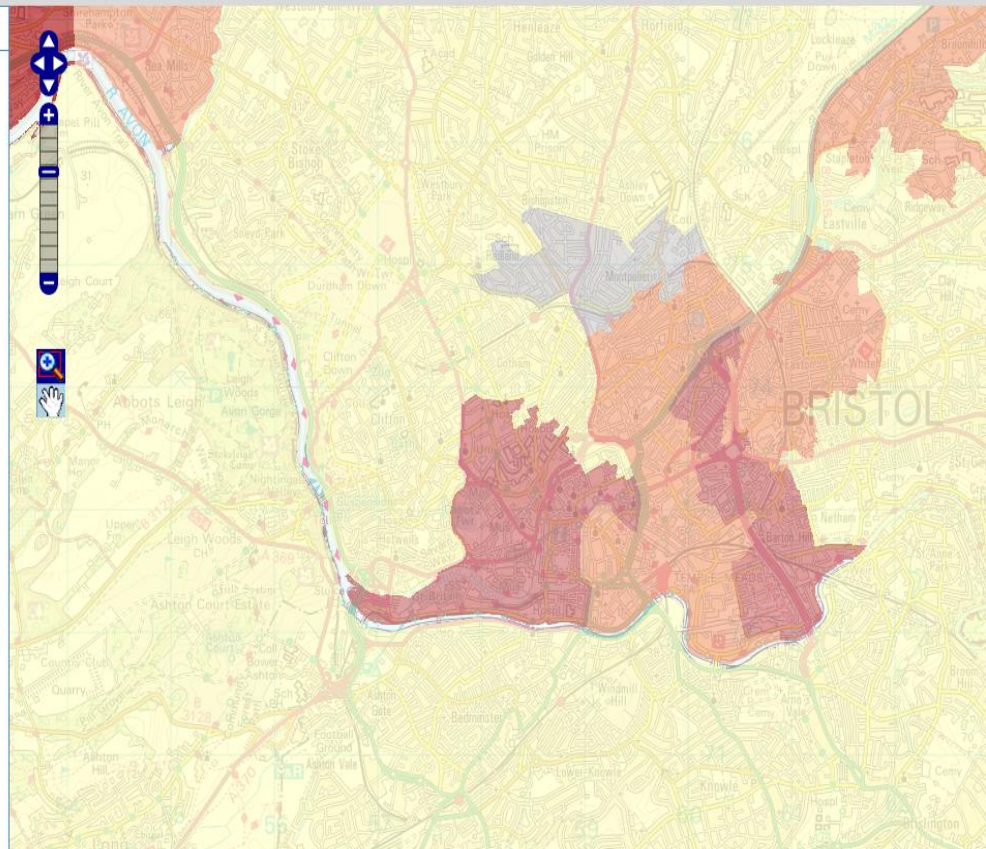
- Flood disadvantage [11.1mbs]
 - Flood hazard exposure [11.2mbs]
 - Socio-spatial climate vulnerability indicators [46.8mbs]
 - Socio-spatial climate vulnerability indices [11.2mbs]
-
- Download all four shapefiles together [46.7mbs]

If you do not have your own copy of the administrative boundaries you can download the 2011 middle layer super output area (MSOA) boundaries from the [Office for National Statistics](#)

Excel Format

The attribute data is also available in individual Excel files

- Flood disadvantage [0.5mbs]
- Flood hazard exposure [0.9mbs]
- LA summaries vulnerability disadvantage [0.1mbs]
- Socio-spatial climate vulnerability indicators [8.61mbs]
- Socio-spatial climate vulnerability indices [0.9mbs]



1000 m
2000 ft

Toggle map query on/off

off

Search for a place

Search by postcode:

Go clear

Search by place name:

Bristol

Go clear

refine selection

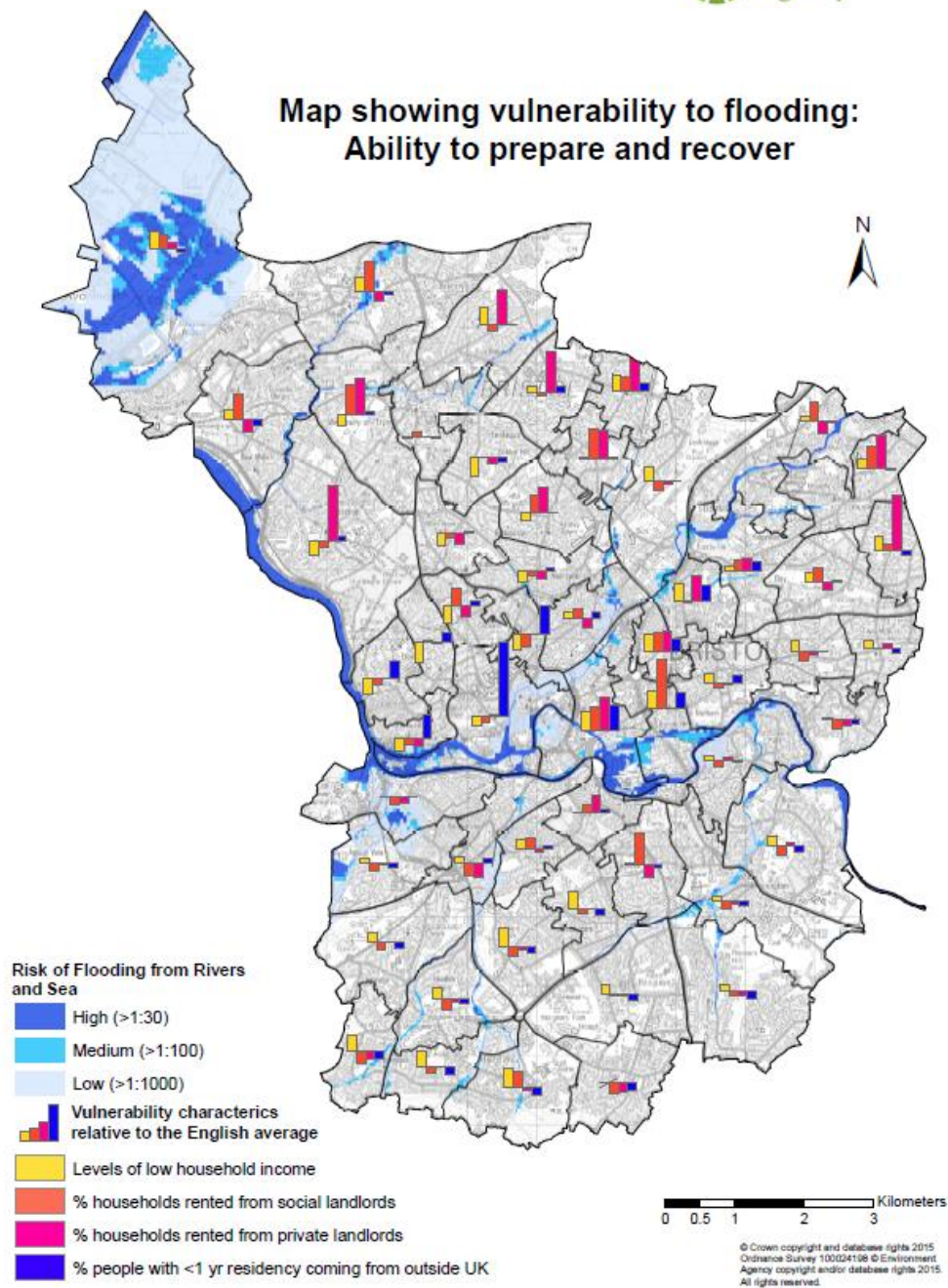
River & coastal flood disadvantage

Map Transparency: 60%

- Slight
- Extremely low
- Relatively low
- Average
- Relatively high
- Extremely high
- Route

Map Examples

Map showing vulnerability to flooding:
Ability to prepare and recover



Help!

Resources



The resources in this library are a combination of tools and reports that may be helpful to users wanting to take action, either in undertaking specific tasks, or in helping make a case for action by quoting from key research or policy documents.

Filter by type

Chart/infographic ▾

Apply

RESOURCE

Map layers

List of all the map layers used in the Climate Just Map Tool



RESOURCE

Map Tool info sheets combined

Lists of all the map layers and indicators used in the Climate Just Map tool, together with definitions and detailed descriptions.



RESOURCE

Technical Guidance

Technical guidance for creating your own maps



RESOURCE

User Guide to Map Tool

Download the guide to using the Map Tool part of the Climate Just website



CHART/INFOGRAPHIC

Adaptation Tools diagram

Diagram of the available adaptation tools.



CHART/INFOGRAPHIC

Roles and responsibilities diagram

Diagram illustrating which content is most relevant to particular job roles.



CHART/INFOGRAPHIC

Tasks diagram

Tasks that the Climate Just website can help with



Questions

Thanks you

Exposure to
climate hazard
+
social
vulnerability
=
climate
disadvantage