



# Community Flood Resilience

Hannah Burgess, Flood Risk Manager, Staffordshire CC  
January 2016

*the knot unites*



# Agenda

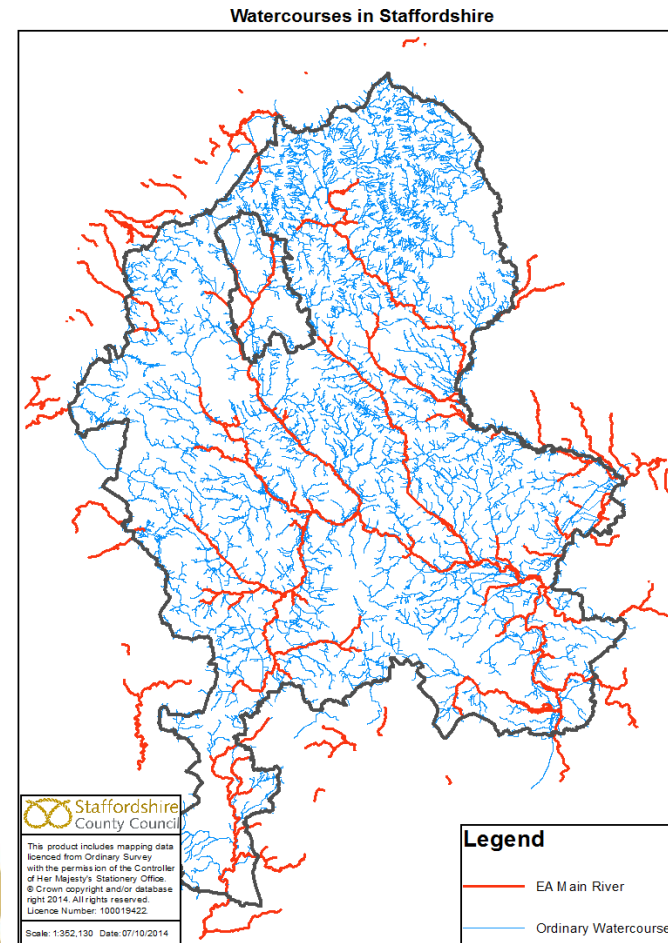
- What is our role as LLFA
- Why is community flood resilience important to us?
- How can we support communities in Staffordshire?

*the knot unites*

# Lead Local Flood Authority role

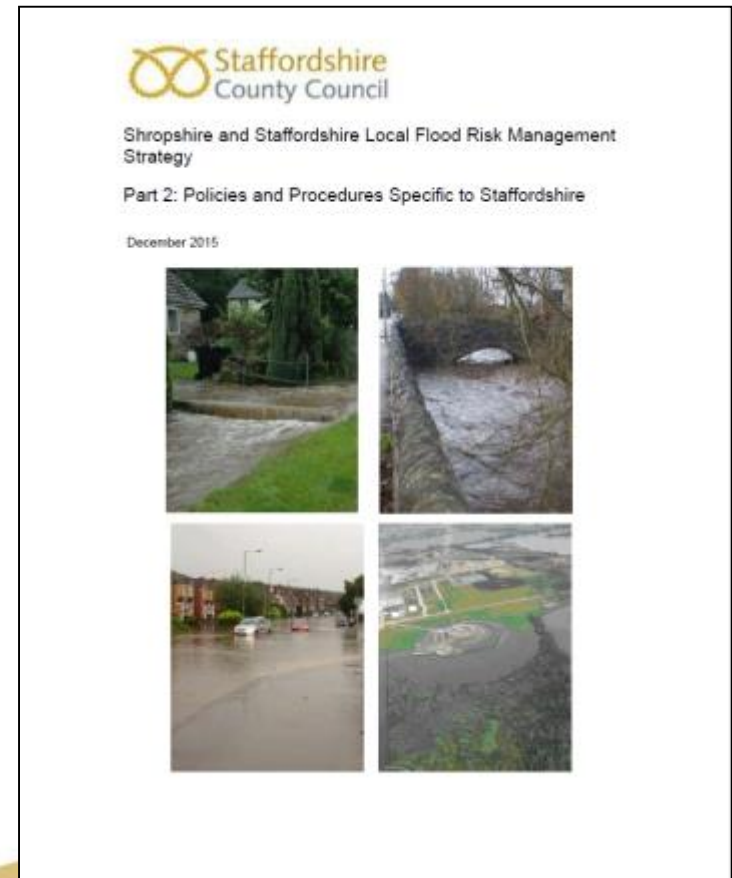
- Pitt Review
- Flood Risk Regulations (2009)
- Flood and Water Management Act (2010)
- Recent localised flooding

*the knot unites*



# Strategic elements

- Partnership working ‘co-ordination’
- Preliminary Flood Risk Assessment
- Flood Risk Management Strategy



*the knot unites*

# FRM Partners

Environment  
Agency: 3 areas

Water  
Companies: STW,  
UU

Highways SCC,  
HA

Sow and Penk  
IDB

8 District Councils

Others: SC,  
Parishes, Peak  
Park, Stoke, CCU,  
Network Rail etc.

*the knot unites*

# Operational elements

- Investigating flood incidents
- Asset management
- Land drainage
- Flood alleviation schemes
- Planning consultee on sustainable drainage and local flood risk

*the knot unites*



# Why is community flood resilience important?

- Limited resource
- Remote communities
- Understanding of flood risk including residual risk
- Actions people can take to help themselves and each other



the knot unites



# Community Flood Resilience Project

- 2015 to 2018
- Review Defra Pathfinder studies
- Identify locations to work in
- Develop project plan
- Work with communities to reduce flood risk and identify funding streams and deliverable measures
- Quick win funding through Local Levy



*the knot unites*



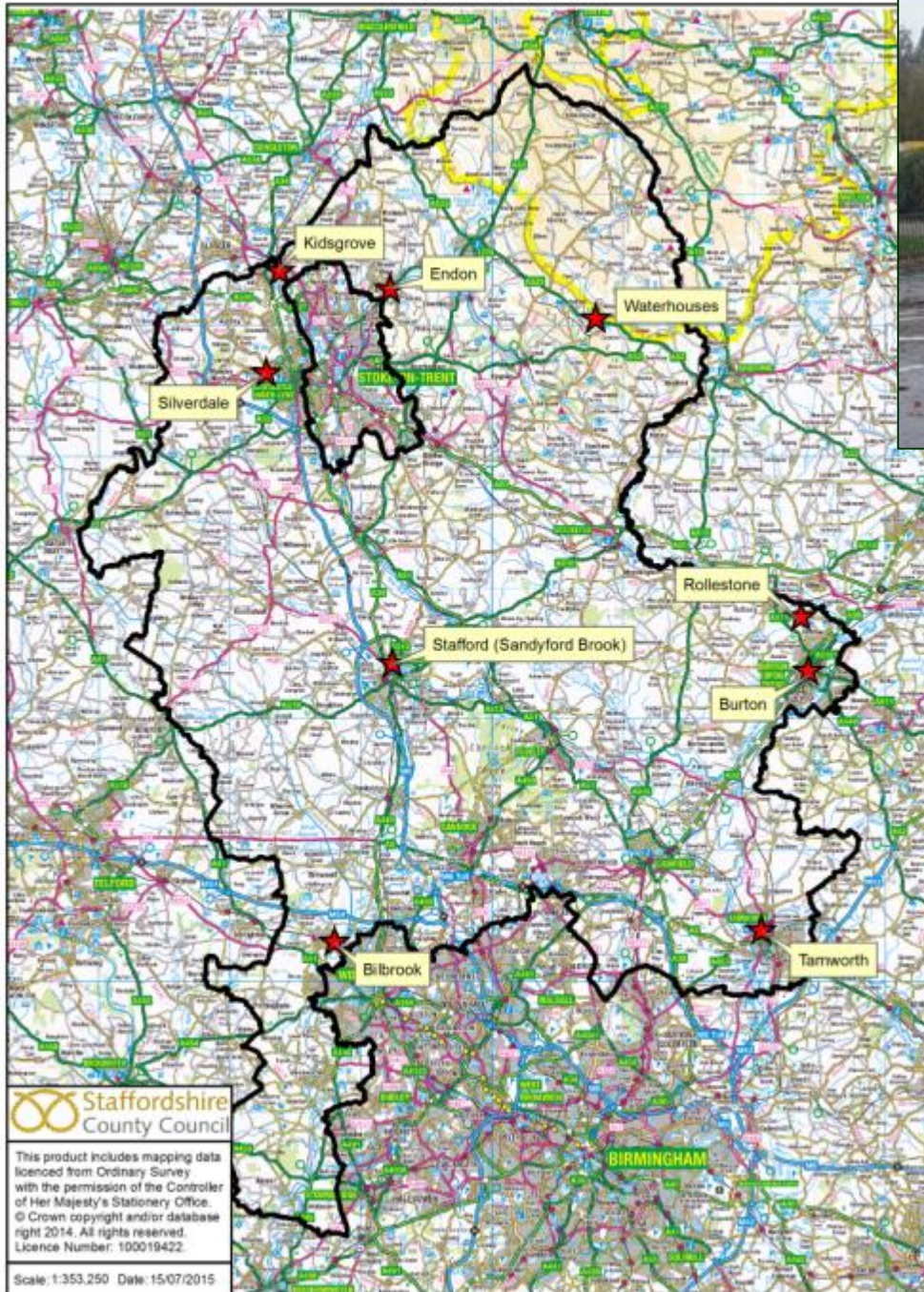
# Defra Pathfinder Projects, 2013-15

- 13 projects, £5m funding
- Projects at different scales and with different objectives
- The overarching common theme was to try different methods of engagement with communities to increase their resilience to flooding
- Reports online



*the knot unites*

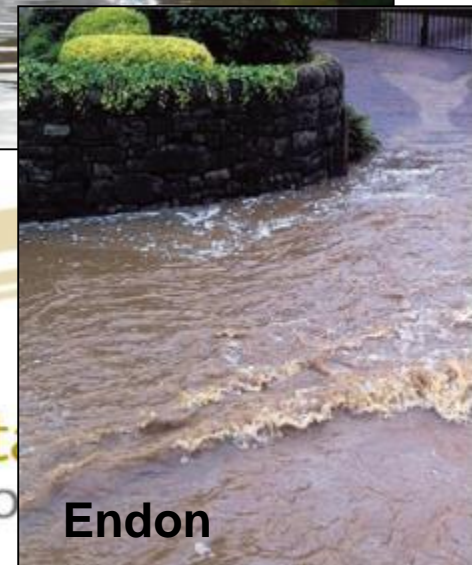
# Project Locations



**Stafford**



**Kidsgrove**



**Endon**



# QUESTIONS?

*the knot unites*

