



# University Hospitals of North Midlands



NHS Trust



Louise Webster  
Head of Environmental Sustainability

# University Hospitals of North Midlands



NHS Trust

UHNM cares for >900,000 people who come for emergency treatment, planned operations and medical care



County Hospital



# University Hospitals of North Midlands



NHS Trust



Royal Stoke University Hospital

- Construction work underway to develop improved facilities and services at both County Hospital and Royal Stoke University Hospital
- £250m investment following the integration of:
  - University Hospital of North Staffordshire
  - Mid Staffordshire Foundation Trust
- £52m investment at County Hospital to renovate and enhance patient areas and wards
- £25m investment at Royal Stoke to provide additional facilities
- £22m will be spent on improving IT systems and medical equipment





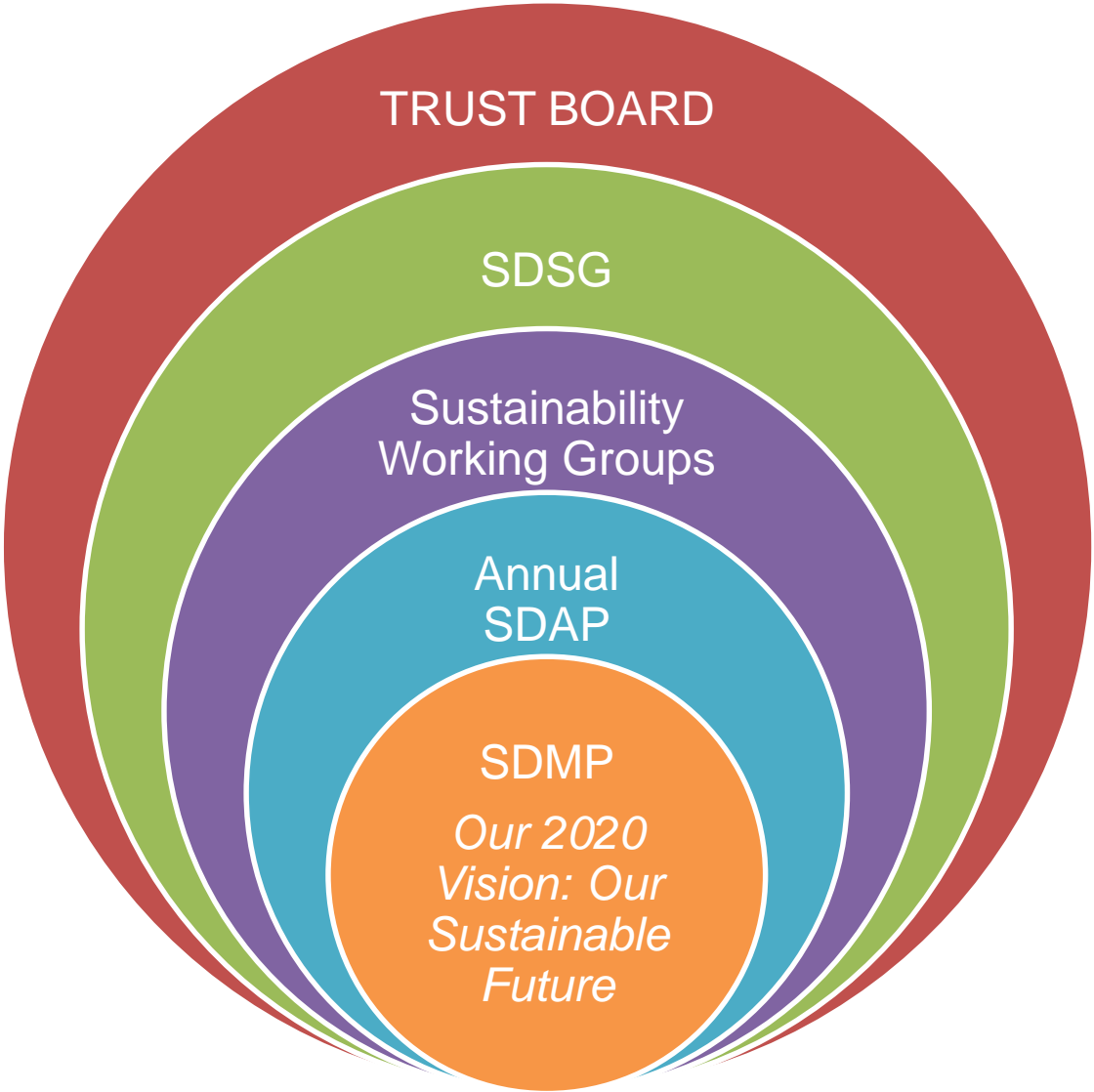
## 2020 Vision:

### UHNM will be the most sustainable NHS Trust in the UK

The Trust is committed to delivering a world-class sustainable healthcare system that works within the available environmental, financial and social resources; protecting and improving health now and for future generations



# Embedding the agenda Trust-wide



# Priority No.1



## Reduce Environmental Impact

We commit to reducing our environmental impact and benefit from a healthier environment. This includes reducing carbon emissions, minimising waste and pollution and using resources efficiently.

**The NHS, public health and social care system has set the target to reduce carbon dioxide equivalent (CO<sub>2</sub>e) emissions by 34% by 2020.**

As such, the following areas will be focussed upon in order to achieve significant reductions:

- Energy and Water
- Procurement
- Sustainable Transport
- Waste
- Food
- Designing the Built Environment



Energy and Water



Waste



Procurement



Sustainable Transport



Designing the Built Environment



Food



# Priority No.2



## Build Healthy, Sustainable & Resilient Services and Communities

We commit to making decisions and using resources in ways that benefit the economic, social and environmental conditions in which we operate. We will establish local level partnerships and collaboration in order to help our community flourish.

We bear the responsibility of addressing the impact on our services, as a result of severe weather events such as heat waves, cold snaps and flooding.

We commit to improving the resilience of our services and built environment, ensuring they are fit for the future. We will build a connected, resilient local community that is better prepared for environmental and climatic changes through local level partnerships and collaboration.



Corporate Social Responsibility (CSR)



Adaptation:  
Resilience to climate change and adverse events



# Priority No.3

## Embed Prevention & Sustainable Clinical and Care Models

With escalating costs, diminishing resources and a changing climate, we commit to the ensuring that our services deliver the best quality of care within the resources available, recognising that it is becoming increasingly important to consider the environmental and social impact of how services are delivered.

UHNM is committed to working in different ways in order to deliver more sustainable health and care. Evidence has shown that the need for acute and specialist interventions can be minimised when there is a system-wide focus on living well and supporting people to manage their lives in a positive way.



Working in different ways

System-wide approach

Prevention

Health improvement

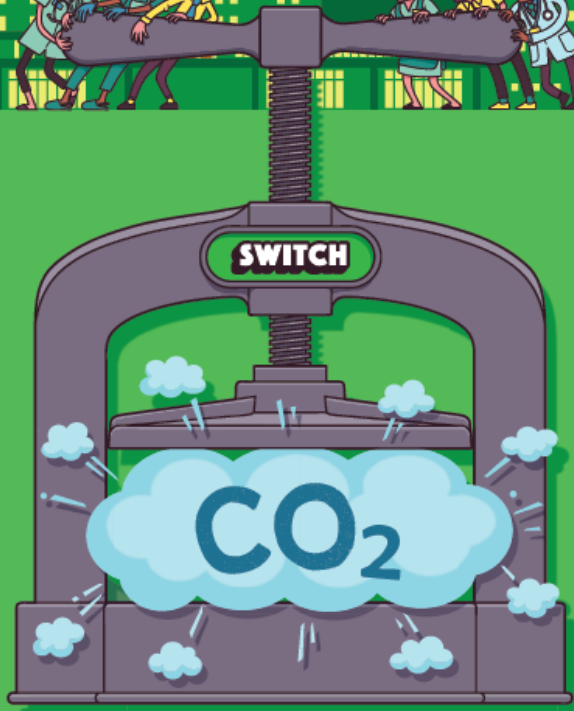
Enabling independence

Resilience



# Switch to reducing **OUR** environmental impact

University Hospitals of North Midlands **NHS** NHS Trust



The NHS, public health and social care system has set the target to reduce carbon dioxide equivalent (CO<sub>2</sub>e) emissions by 34% by 2020

- SWITCH is the UHNM sustainability campaign emphasising the link between Patient care, health and sustainability. A sustainable UHNM will make our Trust world class
- SWITCH will introduce more sustainable working practices to areas including: waste, energy, water, travel and patient care
- Sign up to be a SWITCH champion by emailing [switch@uhnm.nhs.uk](mailto:switch@uhnm.nhs.uk)
- What's good for the environment is good for health!

**SWITCH**  
to a sustainable UHNM

**SWITCH**  
to a sustainable UHNM

**SWITCH**  
to a sustainable UHNM

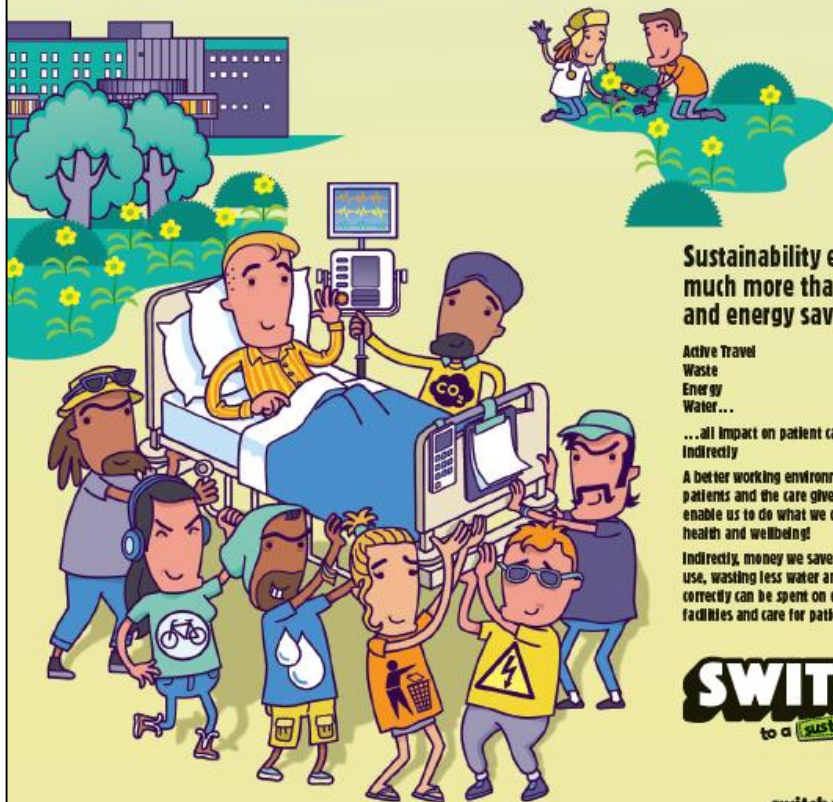
**SWITCH**  
to a sustainable UHNM

**SWITCH**  
to a sustainable UHNM

**SWITCH**  
to a sustainable UHNM



# Switching sustainability to focus on Patient Care



Sustainability encompasses much more than recycling and energy saving light bulbs

Active Travel  
Waste  
Energy  
Water...

...all impact on patient care - directly and indirectly

A better working environment directly benefits patients and the care given by staff. It will enable us to do what we do best - improve health and wellbeing!

Indirectly, money we save by reducing energy use, wasting less water and managing our waste correctly can be spent on our hospital to improve facilities and care for patients

**SWITCH**  
to a sustainable UHNM

[switch@uhns.nhs.uk](mailto:switch@uhns.nhs.uk)

**SWITCH**  
to a sustainable UHNM



University Hospitals of North Midlands



NHS Trust

**Thank you.....**

Louise Webster  
Head of Environmental Sustainability