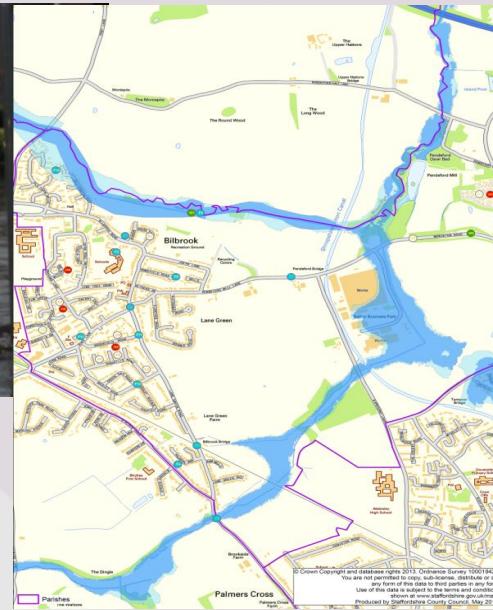


Likelihood	Very Likely 5	5	10	15	25	40
	Likely 4	4	8	12	20	32
	Possible 3	3	6	9	15	24
	Unlikely 2	2	4	6	10	16
	Remote 1	1	2	3	5	8
		1	2	3	5	8
		Negligible	Minor	Moderate	Major	Catastrophic
		Impact				



# Climate adaptation planning – case study in the NHS

Alan Carr  
Sustainability West Midlands  
4 January 2018



Birmingham and Solihull  
Mental Health NHS Foundation Trust



# Supporting BSMHFT

- BSMHFT had made some strong achievements on sustainability, but needed agenda consolidating and re-invigorating.
- We were brought in to build on their good work and develop a Sustainability and Resilience Action Plan. We ran a workshop with key staff to gain their input.
- Included adaptation for the first time. We used our experience to provide some simple pointers on how the Trust could improve its reactivity, response and recovery from extreme weather events.



# Why is adaptation important for BSMHFT?





- Dealing with the consequences of extreme weather (floods, extremes of temperature, storms)
- Impacts on service users / public
  - Stress, anxiety and depression (PTSD) due to, e.g., displacement.
  - Impact of medication/condition and ability to deal with extremes of weather.
  - Lack of preparedness or awareness e.g. heatwaves.
- Impacts on staff and estates
  - Financial damage
  - Transport disruption
  - Supply chain disruption
- Adapting to these changes can save money, improve patient care and maintain continuity.
- Most of these likely to be applicable to **all NHS Trusts...**

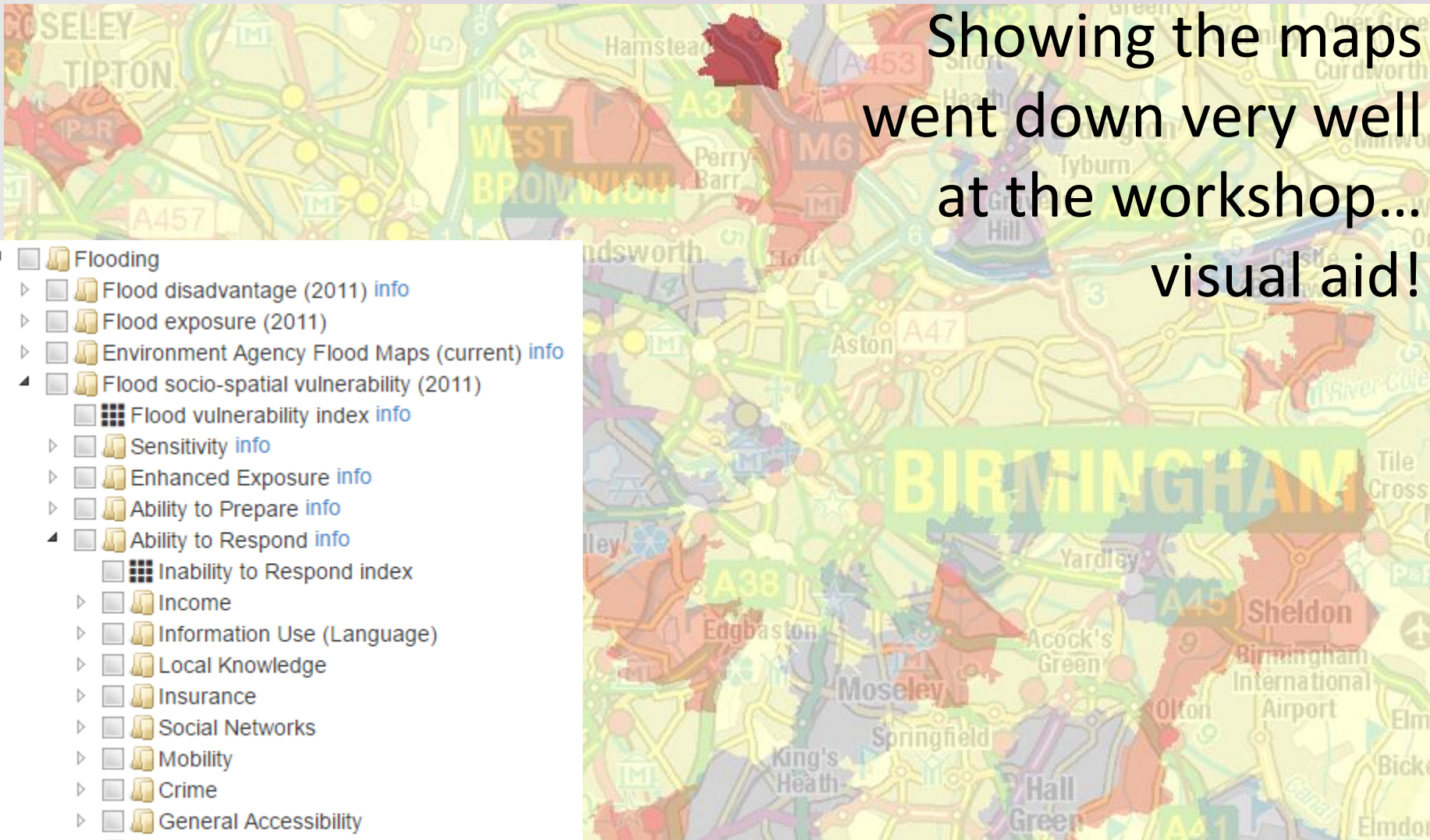


- Can help the Trust to identify both **who** is most at risk (their service users and staff) and **where** the risks are (their service users' locations and their buildings and assets).
- Factors in people's ability to prepare for, respond to and recover from an extreme event.
- We used the tool to identify which of BSMHFT's sites are most at risk from flooding and overheating. Maps are included in the Action Plan.



Showing the maps  
went down very well  
at the workshop...  
visual aid!

- ▣  Flooding
-  Flood disadvantage (2011) [info](#)
-  Flood exposure (2011)
-  Environment Agency Flood Maps (current) [info](#)
- ▣   Flood socio-spatial vulnerability (2011)
  -  Flood vulnerability index [info](#)
  -  Sensitivity [info](#)
  -  Enhanced Exposure [info](#)
  -  Ability to Prepare [info](#)
  - ▣   Ability to Respond [info](#)
    -  Inability to Respond index
    -  Income
    -  Information Use (Language)
    -  Local Knowledge
    -  Insurance
    -  Social Networks
    -  Mobility
    -  Crime
    -  General Accessibility
    -  Ability to Recover [info](#)



- Engagement and participation from key members of staff from across the Trust.
- Appraisal and critique of existing strategies for consideration.
- Independent set of recommendations and proposed activity provided by SWM.
- Development and ratification of a new realistic Action Plan.
- Raising awareness of importance of climate adaptation!
- **Next step** – actually implement actions...



- Have a chat to us about how we can support your organisation on climate resilience.
- Join the network.  West Midlands  
**Climate Resilience**  
Network
- Read the [case study](#) we've done reflecting our work for BSMHFT on resilience and wider sustainability issues.
- Stay for this afternoon's Climate  workshop!





 Sustainable  
Development Unit



## Under the Weather

Improving health, wellbeing and resilience in a  
changing climate

Version 2, March 2015

A support service led by the Environment Agency



**Alan Carr**

**Sustainability Adviser**

**Sustainability West Midlands**

**0121 237 5890**

**alan.carr@swm.org.uk**

**www.sustainabilitywestmidlands.org.uk**

**@SWMtweet**



Birmingham and Solihull



Mental Health NHS Foundation Trust



West Midlands  
**Climate Resilience**  
Network