



Sustainability

a Mental Health Trusts Perspective

Neil Cross

Corporate Property and Sustainability Manager

neil.cross@bsmhft.nhs.uk



Presentation

Our Trust

Our approach to Sustainability

Our Economic, Environmental and Social (Health)
achievements to date

What we will continue to do and what we need to do next



Our Trust

- However measured one of the largest Mental Health Trusts in the Country
- 4000 staff
- 50+ sites
- 60,000+ Patients (plus 10's of 1000's with mental health condition not yet diagnosed!)
- National Specialist Services
- 3 Medium Secure Units
- Circa 800 available beds

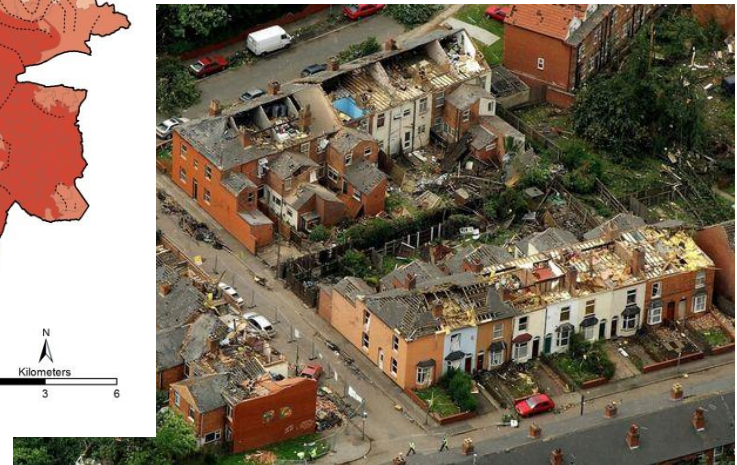
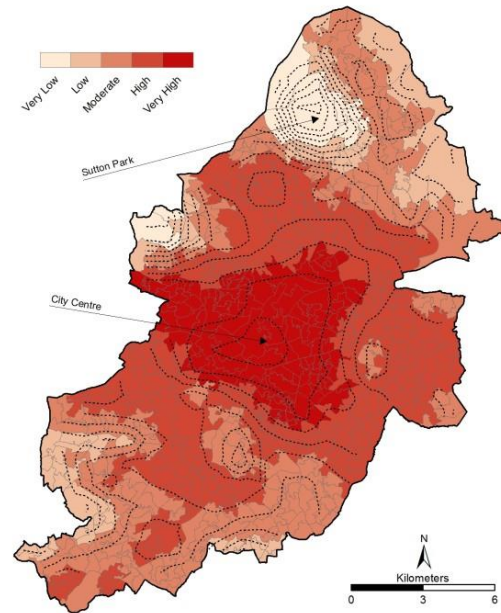


Mental Health & Sustainability

We need to stop and think!

Not just 3rd World Countries.....

- Disproportionally affected
- Stress and Anxiety
- Financial
- Medical Conditions
- Family Groups / Peers
- Knowledge and Resource
- Access to services
- Too often focus on buildings and not people!



Trapped, Isolated, Lost, Abandoned, Scared, Alone

Depressed, Afraid, Frightened, Call for help, Too hot, Too cold, No money,

Need support, Drugs!, Self Harm, Diet and Obesity, No food, No heat, No hope

Improving mental health wellbeing



Our Approach to Sustainability

Strategic Framework with Board Leadership
Sustainable Development & Carbon Management
Group



Our Staff, Our Services Users
Our Services, Our Community

Our Buildings



Economic, Environmental and Social (Health)



Economic, Environmental and Social (Health) Buildings

Outcomes	Projects
<p>8% Energy & Carbon Consumption reduction achieved and maintained</p> <p>NHS 10% target at 2015 NHS published position of 5.5%</p> <p>Cumulative Impact – Cost Avoidance of consumption reduction since baseline 2007/08 = £784,000 Or 3800 Tonnes of Carbon saved</p>	Energy Efficiency Campaign – People
	LED Lighting upgrades
	Ground Source Heat Pumps
	CHP Installation
	Solar PV Installation
	Boiler Upgrades
	Insulation projects
Over 80% of waste recycled Avoiding £32,000 landfill tax per annum	Waste Recycling & Minimisation



Travel Plan Launch Event





- ## **Economic, Environmental and Social (Health) People**
- Listening in Action – Listening and making changes!
 - BICS centre providing professional accredited training
 - NVQ training for staff and service users
 - Clinical Teams running horticulture activities with patients – eating what they grow
 - Rehabilitation of patients including recycling and energy management
 - Conventional Catering Award Winning! - Food and menus deliver healthy & sustainable food choices – **18%** reduction in food waste



Economic, Environmental and Social (Health)

RAID

Assessing Mental Health needs at point of Acute Care

Reducing appointments/travel – single point of treatment

- Average length of acute stay reduced from **8 days to 5**

Street Triage

Working with Police. Local Authority & Ambulance service to assess and Triage Mental health on the streets

Community experts network

A network of volunteers who have a deep understanding of their different communities' cultural and faith issues.



Economic, Environmental and Social (Health)

300 Voices

Partnership between the Trust, MIND, Police and City Council.
Listening & empowering Young Black Men to become active in their recovery rather than passive recipients of health care

Apprenticeships and Training

A partnership with St Basils (homeless charity) to provide apprenticeship opportunities & training to homeless people

Mental Health First Aid:

Training Community & Faith groups, Police & Youth Offending Services, Service users & Carers to better support people with mental health issues in the community – point of care



What Next with BSMHFT

- More work and projects in prevention and early intervention - not waiting for it to happen – *‘nip it in the bud’*
- Developing a Sustainability and Climate Change Adaption Plan
- Continue to embed Sustainability into what we do and how we do it
- Challenge ourselves Economically, Environmentally and Socially!
- Further develop People and the Partnership approach to Sustainable healthcare
- Build and invest for the future - Future proof investments / invest to save opportunities



Quote from John Short – Trust CEO

‘Sustainability is not a *project* and cannot be ticked as done’