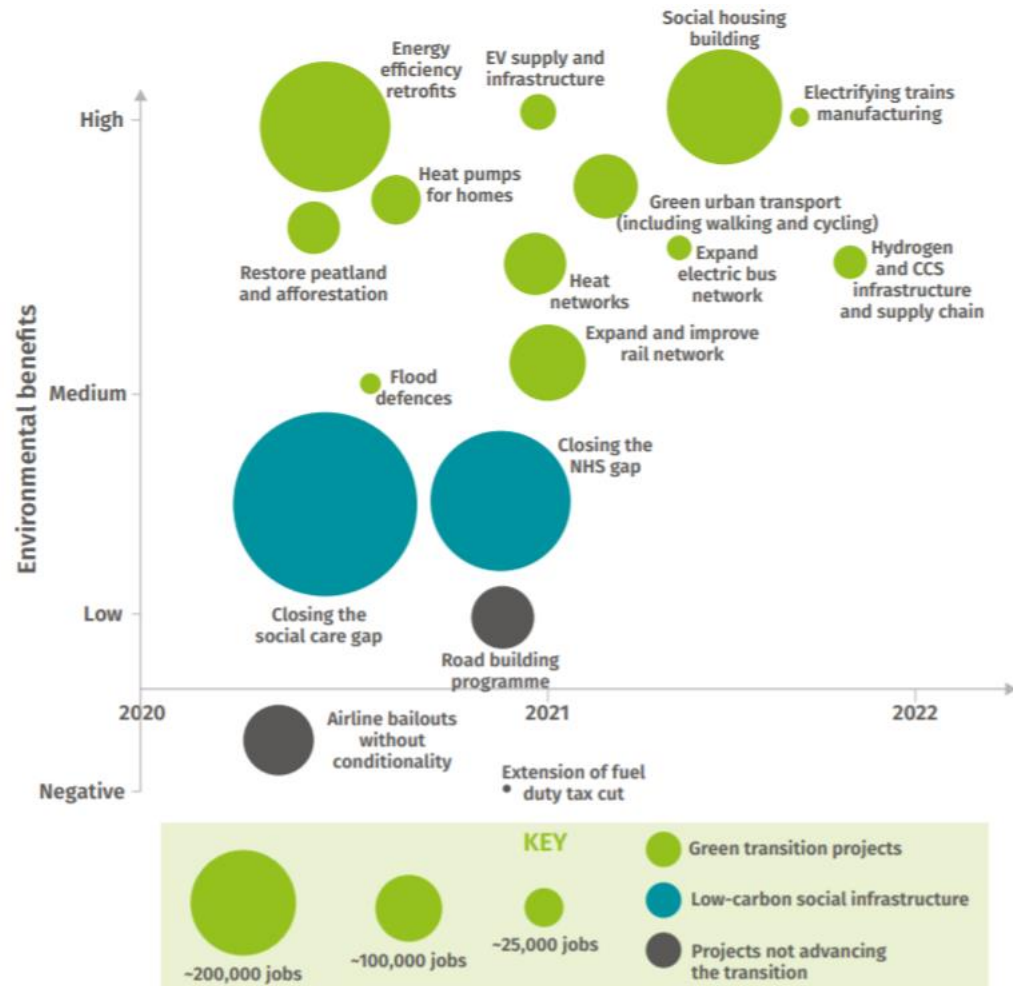


# Low Carbon Jobs and Labour Market Information (LMI)

Ravinder Lalli and John English  
GBSLEP

---

# Low Carbon Jobs – National Picture



Source: IPPR, 2020

## Regional jobs in Low Carbon sector by 2050

Region	Number of Jobs
East of England	119294
East Midlands	96842
London	143764
North East	84205
North West	170601
South East	163014
South West	139765
West Midlands	97015
Yorkshire and Humberside	167697
England	1182197

Source: LGA, 2020

# Midlands Energy Hub LCEGS Study for Midlands LEPs (Midlands Engine area)

## Job numbers by sector and year on year growth

Skill	LCEGS Sector Totals				
	Growth		Growth		2019/20
	2017/18	%	2018/19	%	
Technicians	4,305	8.8%	4,686	0.5%	4,707
Snr Management SME	9,970	3.8%	10,352	7.7%	11,148
Supervisory	10,068	1.9%	10,263	13.4%	11,640
Middle / Junior Management	10,050	3.6%	10,415	8.1%	11,260
Designer / Developer	1,469	4.4%	1,533	5.7%	1,620
Clerical	5,158	5.3%	5,430	8.2%	5,875
Self Employed	1,377	1.2%	1,394	13.2%	1,578
Advisor or Agent	997	2.8%	1,025	5.8%	1,084
Educator	33	3.7%	34	8.9%	37
Specialist or Consultant	5,554	7.6%	5,978	5.0%	6,279
Editor	165	5.4%	174	5.8%	184
Industrial Researchers	1,700	7.4%	1,826	-1.4%	1,800
Scientist	744	3.1%	766	6.7%	818
Maintenance Engineer	11,255	7.9%	12,147	6.3%	12,916
Civil Engineer	836	8.1%	904	-0.6%	898
Production Engineer	2,146	3.4%	2,218	5.1%	2,330
Power distribution Engineer	5,291	5.8%	5,596	5.6%	5,906
Construction Engineer	1,169	7.3%	1,255	7.3%	1,347
Sales Exec	5,474	4.8%	5,740	4.8%	6,013
Marketing Personnel	5,336	5.1%	5,606	7.5%	6,028
General Semi Skilled Worker	11,083	4.7%	11,610	7.8%	12,514
General Labour	13,342	5.0%	14,007	8.0%	15,123
Other Employees	14,997	0.8%	15,123	0.6%	15,218
Administrative workers	5,874	7.4%	6,310	4.9%	6,621
<b>Total Number of Employees</b>	<b>176,395</b>	<b>5.7%</b>	<b>186,486</b>	<b>5.0%</b>	<b>195,817</b>

- 20,000 new jobs in 3-year period (+11%)
- Maintenance engineer and general labour are most employed positions
- Largest increases in jobs around management, sales execs, marketing and engineering positions
- Report indicates 300% growth between now and 2050 possible to deliver on Net Zero.

# Low Carbon and Energy Technologies Sector

---

- Analysis shows strong potential growth
- Key areas for region include:
  - ULEVs
  - Alternative Fuels
  - Carbon Finance
  - Wind Power
- Potential to capitalise on government policy and funding e.g. Ten Point plan
- LEP activity
  - LCET delivery/ recovery plans
  - Recognition of net-zero as a cross cutting priority
  - Skills Deep Dive

# GBSLEP DEEP DIVE COMMISSIONING

## Priority Sectors

Advanced manufacturing  
Food and Drink  
Health Technologies and  
Life Science  
Creative Industries  
Business, Professional and  
Financial Services  
Low Carbon and Energy  
Technologies

## Baseline Dashboards

Black Country Consortium

1. Local landscape and demographic of the GBSLEP area and individual LAs
2. Businesses and enterprise; economic activity
3. Skills supply and demand historic and forecasting.
4. Sector based analysis and trends.

ALL SECTORS!

## Deep Dive

Interviews with business within sectors  
Work with GBSLEP sector leads  
Collate findings  
Identify gaps and future changes  
Publish report

- Skills needs for the sectors
- Demand and pathways
- Skills barriers
- S/M/L priorities

# Timescales

---

- **Baseline Dashboards**
  - BCC have already begun producing reports
  - Expected all dashboards and data available to GBSLEP by 31<sup>st</sup> July 2021
- **Deep Dive**
  - Received three proposal
  - Plan to notify successful provider by July 2021
  - Report produced Autumn 2021
- **Skills Commissioning**
  - Following evidence sectors will identify priorities to commission skills activities from Winter – Spring 2021 subject to the LEP review.

# Low Carbon Jobs and Labour Market Information (LMI)

Ravinder Lalli and John English  
GBSLEP

---