

14:00 – Arrival, registration, tea/coffee

14:15 – Introductions to the day, SWM and each other

The health implications of Air Quality:

Global Action Plan - Larissa Lockwood

What can we learn from London?:

Transport for London - Catherine Westoby

15:15 – Comfort Break – Tea/Coffee

Roadmap to 2030 Air Quality Targets: Have Your Say -

Workshop

Combating air pollution: Green Infrastructure:

Boningale - Maggie Fennel

Improving Air Quality: Cenex Case Studies:

Cenex - Tony Machin

16:45 – An introduction to CIWEM and the event to follow:

CIWEM - Hannah Coogan

17:00 – Close and Networking

18:00 – **CIWEM Event:** The unintended consequences on
air quality of future public policy – **Dr Suzanne Barlington**



AIR QUALITY: BREATHING OUR LAST?



TOM HENDY
SUSTAINABILITY ADVISER
TOM.HENDY@SWM.ORG.UK
0121 237 5890



sustainability
west midlands

GET TO KNOW EACH OTHER

WE HOPE THAT TODAY WILL BE AN OPPORTUNITY, NOT ONLY FOR YOU TO TAKE SOMETHING AWAY, BUT ALSO TO FEED IN YOUR OWN IDEAS AND MAKE NEW CONNECTIONS

TAKE THE NEXT 5 MINUTES TO GO AROUND YOUR TABLE AND INTRODUCE YOURSELVES TO ONE ANOTHER!

TELL EACH OTHER YOUR NAMES (ALWAYS A GOOD START), WHERE YOU WORK, YOUR ROLE, YOUR INTEREST IN AIR QUALITY AND TODAY'S EVENT, YOUR SHOE SIZE, FAVOURITE BISCUITS... THE POSSIBILITIES ARE ENDLESS

WHO ARE SWM?

WE ARE THE SUSTAINABILITY ADVISER FOR THE LEADERS OF THE WEST MIDLANDS CREATED IN 2002 AS A NOT-FOR-PROFIT COMPANY.

OUR ROLE IS TO ACT AS A CATALYST FOR CHANGE THROUGH HELPING LEADERSHIP IN STRATEGY, DELIVERY AND INNOVATION.

OUR VISION: “BY 2020 BUSINESSES AND COMMUNITIES ARE THRIVING IN A WEST MIDLANDS THAT IS ENVIRONMENTALLY SUSTAINABLE AND SOCIALLY JUST.”

OUR VALUES:

- BUSINESS LED AND BUSINESS LIKE
- CREATIVE AND POSITIVE
- RESPECTFUL

OUR MEMBERS

Private Sector:

- Arden Estate Partnerships
- Boningale Nurseries
- Bryt Energy
- Caterpillar (UK) Ltd
- CliniSolutions
- Contented
- CR Plus Ltd
- Ecofocus Group Ltd
- Ecuity Consulting LLP
- Egnida
- International Synergies Limited
- Kew Projects Ltd
- Lodge Cottrell
- Makematic Ltd
- Mott MacDonald
- Ricoh UK Products
- Severn Trent
- SportsArt UK
- Systra
- Tarmac
- Thermal Recycling
- The Midcounties Co-operative
- TP Knotweed Solutions
- Veolia

Third Sector:

- Business in the Community (BiTC)
- Campaign to Protect Rural England (CPRE)
- Cenex
- Climate Change Solutions
- Cycle-R
- Energy Systems Catapult
- Fit for the Future Network
- Footsteps - Faiths for a Low Carbon Future
- Green Shropshire Xchange
- Groundwork WM
- Institute of Civil Engineers - WM
- Localise West Midlands
- Marches Energy Agency
- Meres & Mosses Business Environment Network
- Midlands Environmental Business Company
- NFU West Midlands
- Rooftop Housing Group
- Severn Rivers Trust
- Social Enterprise West Midlands
- Staffordshire Business & Environment Network (sben)
- Sustainable Housing Action Partnership (SHAP)
- The Lunar Society
- Velorim Ltd

Public Sector:

- Aston University, inc. EBRI
- Centre for Research into Environmental Science & Technology (CREST)
- Coventry City Council
- Coventry University
- Environment Agency
- Keele University
- Shrewsbury and Telford Hospital NHS Trust
- Staffordshire County Council
- University of Birmingham
- University of Warwick
- University of Wolverhampton
- Walsall Healthcare NHS Trust
- Worcestershire County Council

Our members enjoy access to our extensive communications network, a place at our annual conference and discounts on consultancy. To enquire about membership, please contact enquiries@swm.org.uk



NETWORKS



West Midlands
**Sustainability
& Public Health**
Network



West Midlands
Green Business Clubs
Network



West Midlands
NHS Sustainability
Network



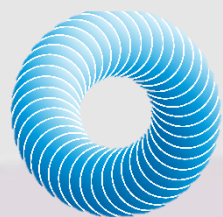
West Midlands
Green Communities
Network



West Midlands
**Public Sector
Sustainability & Energy**
Network



West Midlands
Climate Resilience
Network



OUR WORK

BEING A CROSS SECTOR ORGANISATION, WE GET INVOLVED IN ALL SORTS FROM RUNNING EVENTS LIKE TODAY, CARRYING OUT RESEARCH AND ANALYSIS, PRODUCING STRATEGIES AND REPORTS TO CONSULTANCY.

OUR FINGERS ARE IN LOTS OF PIES...

WE HAVE CASE STUDIES AVAILABLE OF SOME OF THE WORK WE'VE CARRIED OUT IN THE PAST AVAILABLE, AND WE'RE HAPPY TO TALK TO YOU ALL ABOUT IT!

ONE PIE-CE OF WORK WE'RE CARRYING OUT AT THE MOMENT IS THE DEVELOPMENT OF THE WEST MIDLANDS SUSTAINABILITY ROADMAP TO 2030. I'LL BE TALKING TO YOU LATER IN THE WORKSHOP TO GET YOUR IDEAS ON HOW AIR QUALITY SHOULD BE INCLUDED IN THIS.



cenex



TIME FOR US TO SHUT UP

TIME FOR US TO SHUT UP FOR A BIT NOW AND WELCOME OUR FIRST
SPEAKERS OF THE DAY



cenex



sustainability
west midlands

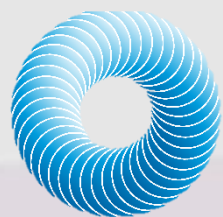
COMFORT BREAK

WE'RE GOING TO HAVE A SHORT COMFORT BREAK NOW FOR THE NEXT 15 MINUTES

TEA, COFFEE AND BISCUITS ARE AVAILABLE - HOPEFULLY THERE WILL BE SOME OF YOUR FAVOURITES...



WORKSHOP:
ROADMAP REFRESH
LOOKING TO 2030



cenex



sustainability
west midlands

WHAT WE READ...

- LOCAL ENERGY PLANS FROM EACH LOCAL ENTERPRISE PARTNERSHIP IN THE WEST MIDLANDS
- UK INDUSTRIAL STRATEGY
- CLIMATE CHANGE ACT
- 25 YEAR ENVIRONMENT PLAN
- CLEAN GROWTH STRATEGY
- ENVIRONMENT BILL
- NATIONAL ADAPTATION PLAN
- CLEAN AIR STRATEGY
- ROAD TO ZERO
- CYCLING AND WALKING INVESTMENT STRATEGY
- FUTURE OF MOBILITY: URBAN STRATEGY
- THE PARIS AGREEMENT
- SUSTAINABLE DEVELOPMENT GOALS
- RENEWABLE ENERGY DIRECTIVE



WHO WE ASKED...

PUBLIC SECTOR

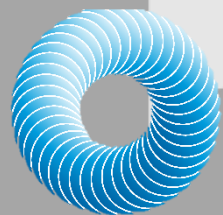
- KEELE UNIVERSITY
- ASTON UNIVERSITY
- UNIVERSITY OF WARWICK
- UNIVERSITY OF BIRMINGHAM
- COVENTRY UNIVERSITY
- WORCESTERSHIRE COUNTY COUNCIL
- CITY OF WOLVERHAMPTON COUNCIL
- BECCI/ENTRESS
- ENVIRONMENT AGENCY

PRIVATE SECTOR

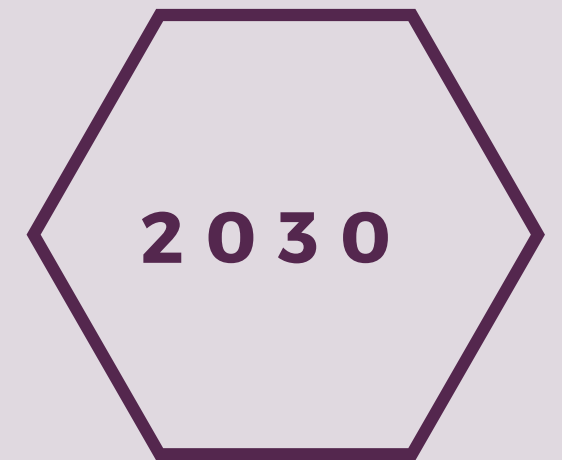
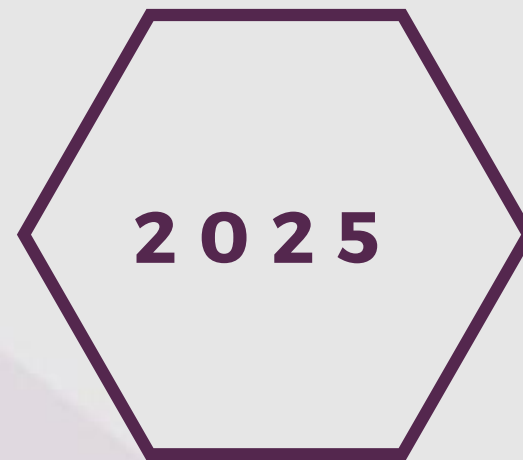
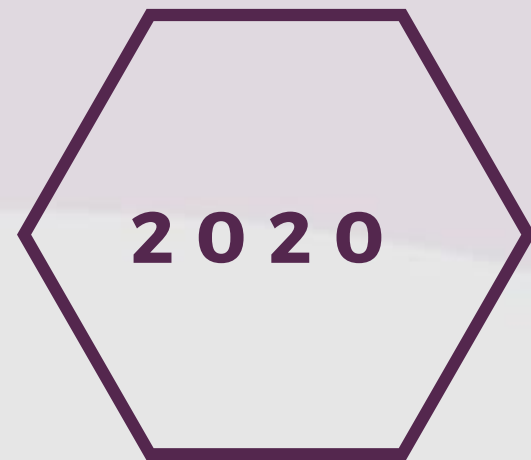
- BONINGALE NURSERIES
- SYSTRA
- MOTT MACDONALD
- SEVERN TRENT
- INTERNATIONAL SYNERGIES
- SEVERN TRENT
- ENCRAFT
- I-CLEAN SYSTEMS (NOW SITEMARK)

THIRD SECTOR

- ENERGY SYSTEMS CATAPULT
- INSTITUTE FOR CIVIL ENGINEERS
- CENEX
- MARCHES ENERGY AGENCY
- NATIONAL FARMERS UNION
- SUSTAINABLE HOUSING ACTION PARTNERSHIP
- MIDLANDS ENVIRONMENTAL BUSINESS COMPANY



WHAT'S NEW?



THEMES AND HEADLINES

ENVIRONMENT

ECONOMY

SOCIAL

CLEANING UP OUR AIR AND WATER

REDUCED INEQUALITIES

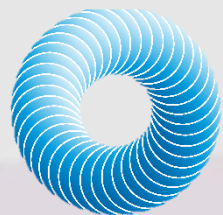
MINIMISING WASTE MAXIMISING PRODUCTION

ENHANCING THE NATURAL ENVIRONMENT

CLEAN AND AFFORDABLE ENERGY

CLEAN AND ACTIVE TRAVEL

ADAPTING FOR THE FUTURE



cenex



sustainability
west midlands

FIRST LOOK DESIGN



Social Equity &
Health



Minimising
Waste



Clean Air
& Water



Sustainable
Energy Use



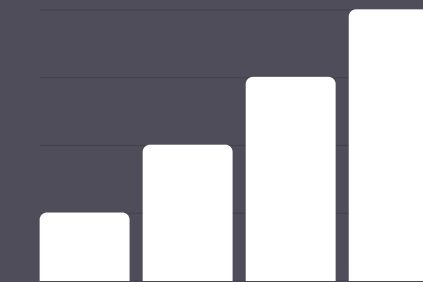
Clean &
Active Travel



Adapting for
the Future



Natural
Environment



Sustainable
Growth



AIR QUALITY



ENSURING THIS GENERATION AND GENERATIONS TO
COME WILL NOT SUFFER DUE TO CURRENT
DECISIONS IMPACTING THE ENVIRONMENT AROUND
US.

TARGETS

FROM THE WORK WE'VE DONE SO FAR, WE HAVE CREATED SOME TARGETS FOR ALL THEMES, INCLUDING CLEAN AIR AND WATER, THESE ARE:

'REDUCE THE MORTALITY AS A RESULT OF PM2.5 POLLUTION EXPOSURE BY 50% BY 2025 (FROM 2020 LEVELS)'

AND

REDUCE THE MORTALITY AS A RESULT OF PM2.5 POLLUTION EXPOSURE BY A FURTHER 50% BY 2030 (FROM 2025 LEVELS)'



YOUR PART

TO CREATE THE MOST INFORMED ROADMAP WE CAN, WE WANT AS MUCH INPUT FROM EXPERTS AS POSSIBLE, SO, DO YOU -

- THINK THESE TARGETS ARE REALISTIC AND AMBITIOUS ENOUGH?
- THINK THERE ARE OTHER AIR QUALITY TARGETS WE SHOULD INCLUDE IN THIS ROADMAP?

DISCUSS WITH YOUR NEW FRIENDS AND CAPTURE YOUR CONVERSATION ON THE FLIP CHARTS PROVIDED - BE PREPARED TO FEED BACK YOUR TOP SUGGESTIONS!



BACK TO BUSINESS

THANK YOU FOR ALL YOUR FEEDBACK AND COMMENTS ON THE ROADMAP, AS MENTIONED THERE WILL BE AN OPPORTUNITY TO SEE THE FIRST DRAFT OF THE ROADMAP AT **SWM'S SUMMER SOCIAL ON JUNE 25** WHERE YOU CAN FEED IN YOUR THOUGHTS ON THE WIDER STRATEGY

NOW BACK TO OUR SPEAKERS!



THANK YOU



UPCOMING EVENTS

SWM SUMMER SOCIAL (MEMBERS ONLY!) - 25 JUNE -
RICOH, TELFORD

WASTE & RESOURCES - 11 SEPTEMBER - NEC

ANNUAL CONFERENCE - 3 DECEMBER - EDGBASTON
PARK HOTEL, UNIVERSITY OF BIRMINGHAM

NATURAL ENVIRONMENT - 4 MARCH - TBC

KEEP IN TOUCH



WWW.SWM.ORG.UK



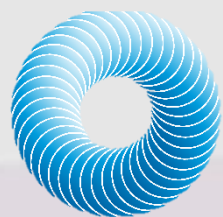
[@SWMTWEET](https://twitter.com/SWMTWEET)



ENQUIRIES@SWM.ORG.UK /
TOM.HENDY@SWM.ORG.UK



0121 237 5890



cenex



sustainability
west midlands