

West Midlands Combined Authority (WMCA)

Sustainability Support Programme SWM Board Update

21 March 2016

Dr Simon Slater, Associate Director
Sustainability West Midlands
s.slater@swm.org.uk

The West Midlands Combined Authority



Focus: local economic growth and public sector efficiency

Core members: Black County, Birmingham, Solihull, Coventry councils, and others joining within wider 3 LEP reach

Powers and funding: devolved areas of transport, housing, skills

Elected Mayor: May 2017 with cabinet of representatives from elected local councils

Strategy: Single Economic Plan (SEP) and supporting programmes. Also Midlands Engine - WM & EM transport focused initiative

Timetable: WMCA fully operational from (June 2016) and transfer of current powers and funding phased in until end of 2017.

Opportunities for Sustainability?



SWM annual conference with WMCA informed Sustainability Review of WMCA Proposed Powers and Activities – November 2015

<http://www.sustainabilitywestmidlands.org.uk/resources/wmca-powers-and-activities-draft-sustainability-review/>

Governance - Needs cabinet member post supported by officers to keep on agenda

Strategy - Needs to include roadmap 2020 goals of productivity, carbon reduction, and addressing health inequality, and clear monitoring of progress.

Programmes - Needs to integrate sustainability goals into new Investment Fund, Business Support, Skills, Housing, Transport, Innovation & look at existing cross-LEP sustainability programmes

SWM Sustainability Support Programme



SWM support programme for WMCA – January to Spring 2016

<http://www.sustainabilitywestmidlands.org.uk/projects/west-midlands-combined-authority-sustainability-support-programme/>

Governance - SWM Board to act as sustainability advisory group looking at progress and supporting CEX and future WMCA cabinet member lead

Strategy - Single Economic Plan (SEP)–

sustainability advice, stakeholder management to test and work on joint priorities, update evidence base e.g LEP joint low carbon statement, 2020 Roadmap and Futures Work, 3 LEPs good practice.

Programmes – inform with existing good practice e.g. cross-LEP projects green business clubs, environmental infrastructure, local energy networks

	12 Key Future Drivers for Birmingham and the West Midlands 2020-2060 (Society, Business, Environmental)
S1	Population Changes
S2	Changing workforce, skills and working practices on business
S3	Impact of lifestyles and environment on health
S4	Increased demand for more regional or local powers and governance
S5	Widening inequality and inclusion gap
B1	Knowledge economy and networked world
B2	Accelerated change from new technology opportunities for business
B3	Globalisation of markets and competition on business
B4	Increased stress on transport infrastructure for public services and business
E1	Pressure for climate change adaptation
E2	Emphasis on lower carbon energy supply, security and cost for public services, business, and communities
E3	Increased pressure on natural resources

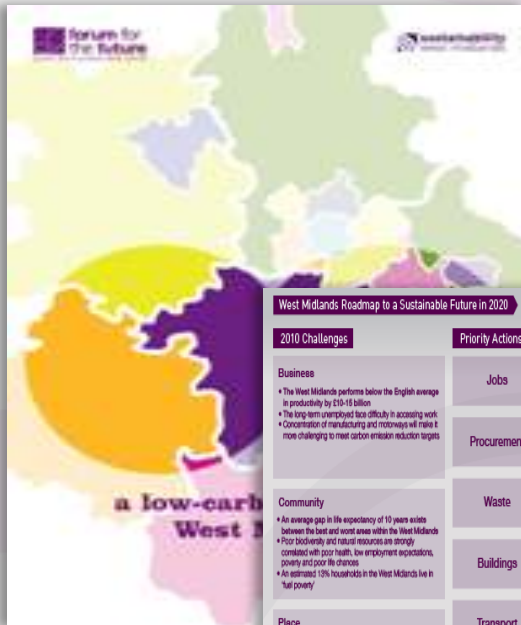
Research we are drawing on...

Our Vision & Roadmap to 2020

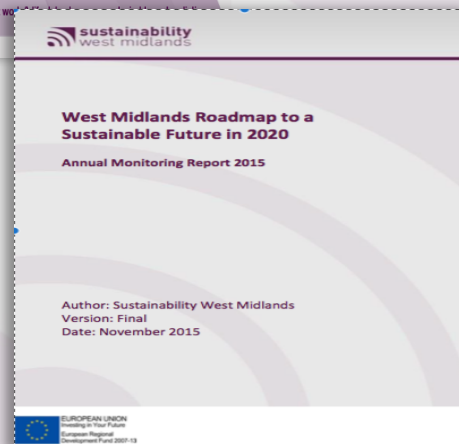
Vision: By 2020 businesses and communities are thriving in a West Midlands that is environmentally sustainable and socially just.

Roadmap: The 2010-2020 sustainability goals

- Improve the productivity of our economy by 30%
- Reduce carbon emissions from transport, buildings and business by 30%
- Reduce the health inequality gap within our communities by 30%



West Midlands Roadmap to a Sustainable Future in 2020		
2010 Challenges	Priority Actions	2020 Vision
Business <ul style="list-style-type: none"> The West Midlands performs below the English average in productivity by £10-15 billion The long-term unemployed face difficulty in accessing work Concentration of manufacturing and motorways will make it more challenging to meet carbon emission reduction targets 	Jobs <ul style="list-style-type: none"> Development & coordination of initiatives to stimulate low carbon jobs & skills 	Business <ul style="list-style-type: none"> The West Midlands is a hub for low-carbon technology innovation and an international supply, increasing productivity by 30% There has been growth in the building refurbishment industry and the manufacture of wind turbines, fuel cells and solar fittings Investment in the motor industry has taken advantage of the 'green recovery' market
Community <ul style="list-style-type: none"> An average gap in life expectancy of 10 years exists between the best and worst areas within the West Midlands Poor biodiversity and natural resources are strongly correlated with poor health, low employment expectations, poverty and poor life chances An estimated 15% households in the West Midlands live in 'fuel poverty' 	Waste <ul style="list-style-type: none"> Infrastructure for diverting commercial & industrial waste from landfill 	Community <ul style="list-style-type: none"> The life expectancy gap has fallen to 6 years as a result of employment, less pollution and healthier lifestyles Up-skilling programmes have equipped the local workforce with skills to enter new job markets Urban farming schemes are in place, many households, hospitals and schools are reaping the associated health benefits
Place <ul style="list-style-type: none"> On top of national targets, the West Midlands needs to reduce emissions by an additional 2 million tonnes of CO2e due to economic geography and limited capacity for 'offshore' renewables Renewable energy capacity in the West Midlands will need to increase fifteen-fold to meet the national target Transport accounts for 35% carbon dioxide emissions in the West Midlands and use of public transport is falling A legacy of mineral land use has resulted in the degradation of valuable natural resources 	Buildings <ul style="list-style-type: none"> Refurbishing existing housing stock and buildings to improve energy efficiency 	Place <ul style="list-style-type: none"> Regional direct carbon emissions reduced by around 30% from energy efficiency action and 20% of electricity from renewable sources Many communities and businesses own micro-generation facilities to produce their own energy Homes are built to 'zero carbon' standards Traffic volumes have decreased 20% in rush hour due to flexible working & dedicated coach and car-sharing lanes Infrastructure is in place for the use of electric cars and bicycle sharing schemes New flood defences have been put in place to defend against increasingly frequent floods
	Transport <ul style="list-style-type: none"> Improved low carbon transport choices - Bikes, walking, cycling, walking 	
	Energy <ul style="list-style-type: none"> Decentralised energy networks focused on regeneration areas 	
	Environment <ul style="list-style-type: none"> Environmental infrastructure to enhance water supply, flood defences & green spaces 	
Leadership & perception change - civic and corporate leaders showing that we...		



Annual Monitoring: Progress on sustainability goals and priority cross-sector actions

Only region in UK with an independent and monitored sustainability plan

Perception survey of WM 'excellent-good' progress & joint working on....

Sustainability Priority Action	2015	Since 2010
Transport – flexible & active	51%	Up 2%
Environment – green infrastructure	49%	Up 5%
Buildings – new & retrofit	40%	Down -5%
Waste - commercial	39%	Down -2%
Energy – decentralised networks	38%	Up 7%
Leadership & perception change – promoting realistic & desirable future	38%	Up 2%
Procurement – innovation & cost saving	30%	Down -17%
Jobs – coordination & promotion of low carbon support	31%	Down -18%

Research we are drawing on...

Joint WM LEP EU Low Carbon Funding Statement



Joint Statement for West Midlands LEPs on intent to collaborate on EU priorities on low carbon, climate change and the environment – August 2013

Introduction

This statement has been developed following feedback from the European Advisory Panel (EAP) and the supporting working groups to produce a joint statement that can be used or adapted by West Midlands Local Enterprise Partnerships (LEPs) as they develop their draft EU funding strategies for submission on the 7th October 2013.

The benefits of the statement are to demonstrate:

- Intent to collaborate where relevant to maximise the impact and benefits of the EU funding as the government has indicated this will be one of assessment criteria and cross-LEP programmes will be viewed more favourably than a series of similar individual local bids
- Helps set out the beginnings of a work programme to engage cross-LEP partners who have potential match funding and expertise.
- Demonstrates how the requirements of the cross-cutting theme of sustainability is being addressed strategically by the LEPs within the West Midlands

This statement is based on a series of cross-LEP meetings around the low carbon, climate change, and environment priority themes over the last 6 months and the new EAP Low Carbon and Environment Working Group which met on 20th August 2013. Thanks to all those that have contributed to date, however this statement represents the independent views of the lead organisation and chair, Sustainability West Midlands, and does not necessarily represent all of the views of the members of the current working group.

How to use this joint statement

Please feel free to draw from and adapt the wording below. The first paragraph is a summary, with the rest of the text providing substance to our claims to already be working together successfully, developing joint programmes, and a strategic approach to the cross-cutting theme of sustainability.

Suggested joint statement wording

"There is a strong history of collaboration in the low carbon economy, climate change, and the natural environment across the West Midlands between the public, private and voluntary sectors, including through previous structural funds programmes. The [INSERT NAME] LEP intends to build on that legacy by cooperating with the five other LEPs in the West Midlands geography in the development and delivery of its low carbon theme and the related climate change and environment priorities. This will enable businesses within the LEP area to benefit from the greater scale, resources, efficiency, and impact of support across the region as well as enable activities that reflect the wider geography of business supply chains and clusters. We are continuing to work

For more information contact Mark Schneider or Joy Holland at m.schneider@wmeuropeanservice.eu & j.holland@wmeuropeanservice.eu, or visit the WMES website www.wmeuropeanservice.eu

Developed by SWM and LEPs in 2013 to inform EU funding strategies and cross-LEP programmes

Supported by West Midlands EU low carbon evidence base

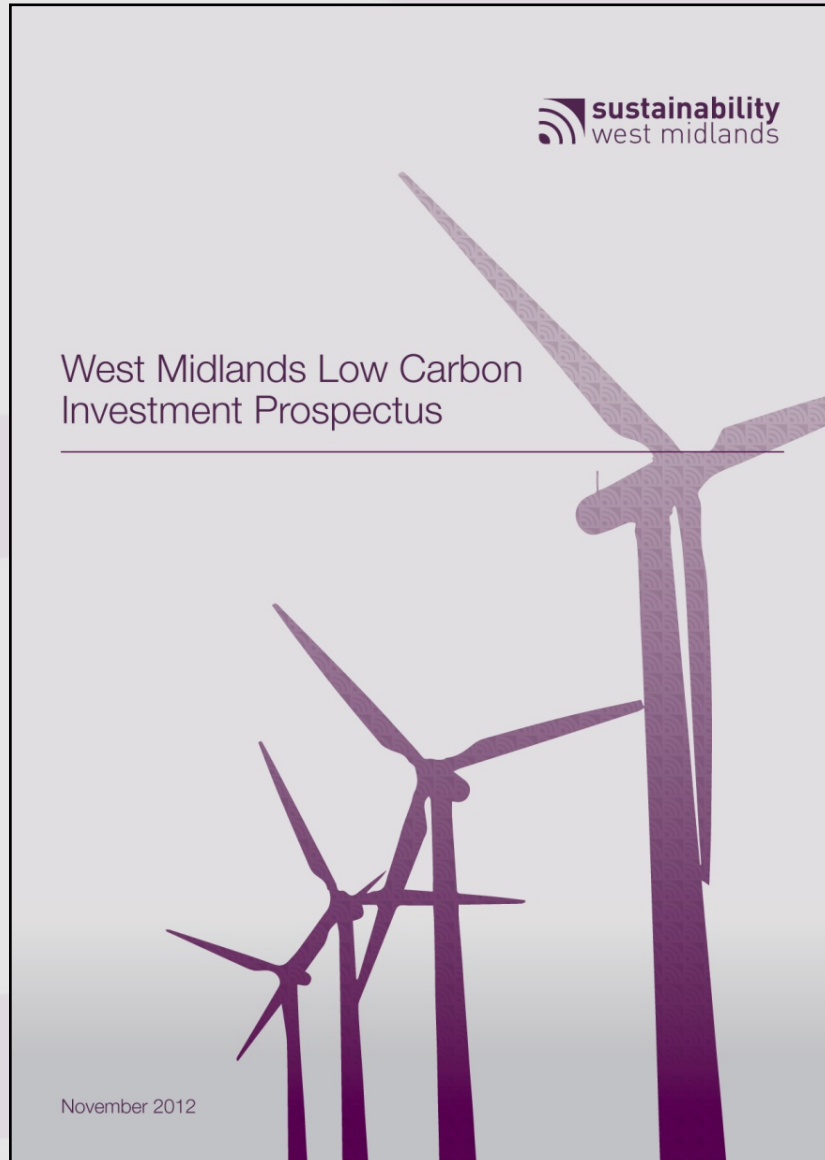
Cross-LEP programmes developed ready to be taken forward:

- Green business support
- Decentralised energy support
- Green Infrastructure support

Other reserve programmes included innovation and procurement support

Research we are drawing on...

The West Midlands Low Carbon Investment Prospectus



To raise profile of our collective strengths and opportunities to investors in global market - business, institutional, government

Demonstrating local commitment to low carbon and cross-sector working - rapid sharing of ideas, resources and skills

Improve attractiveness of individual Local Enterprise Partnership sites – become part of a bigger opportunity

Successfully used by inward investment teams since 2013 – currently updating with 2016 research mapping exercise

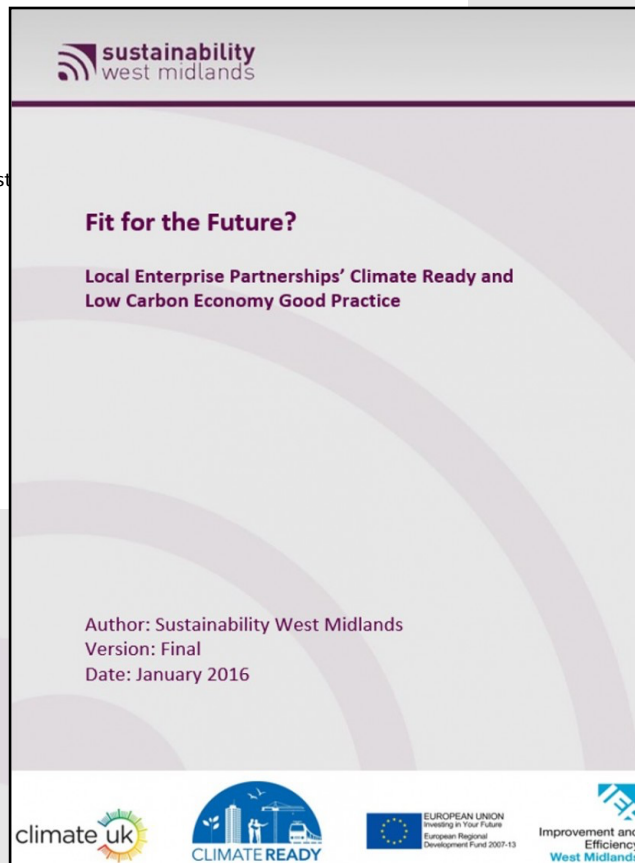
Research we are drawing on...

Benchmarking of WM Councils and LEPs on Sustainability Good Practice

West Midlands local authority benchmark - 2014

Addressing climate change: mitigation, adaptation and the
low carbon economy

Sustainability West
Version: Final
February 2015



Since 2010 SWM has run annual sustainability benchmark of WM local authorities to measure and share good practice.

Longest running benchmark exercise on sustainability and local authorities in UK

In 2016 produced first benchmark in UK of all 39 LEPs on sustainability, including the 6 WM LEPs

SWM Sustainability Support Programme



SWM support programme for WMCA – January to Spring 2016

<http://www.sustainabilitywestmidlands.org.uk/projects/west-midlands-combined-authority-sustainability-support-programme/>

Governance - SWM Board to act as sustainability advisory group looking at progress and supporting CEX and future WMCA cabinet member lead

Strategy - Single Economic Plan (SEP)–

sustainability advice, stakeholder management to test and work on joint priorities, update evidence base e.g LEP joint low carbon statement, 2020 Roadmap and Futures Work, 3 LEPs good practice.

Programmes – inform with existing good practice e.g. cross-LEP projects green business clubs, environmental infrastructure, local energy networks

Governance

SWM Board member Martin Reeves now also part-time WMCA CEX (March 2016 – May 2017 until Mayor elected) and current WMCA Sustainability Lead.

WMCA Cabinet member roles still being decided.

Not yet supporting officer group which is SWM is fulfilling as an interim.

Next 2 months

Communicate how sustainability supports WMCA goals to senior management and elected members

Strategy

Key roadmap 2020 indicators of productivity, carbon reduction and health inequality built into the latest SEP objectives and measures (PMF – Policy Monitoring Framework).

Input into workshops around low carbon technology / potential to expand on Birmingham recent Energy strategy evidence base.

Using national LEP benchmarking and refresh of WM LA sustainability benchmarking to identify good practice to scale up across WMCA / SEP area.

Next 2 months

Identify key sustainability stakeholders and networks for WMCA ‘engagement’ on SEP

SWM Workshop in May with stakeholders from 3 LEPs and LAs to share results of existing good practice and agree support for scaling up areas of existing good practice that would help meet WMCA/SEP goals

Potential sustainability and resilience review of SEP and recommendations to

Programmes

Continue to promote joint LEP statement and cross-LEP projects green business clubs, environmental infrastructure, local energy networks

Next 2 Months

Ensure work on PMF leads to sustainability built into new programmes such as combined investment fund and technical support in place for appraising and commissioning new programmes

Develop new proposals if required from results of May workshop

The SWM Board is acting as an advisory board for the WMCA therefore:

Q: Are you happy with reported progress to date?

A: Yes overall good progress

Q: Are there any questions or suggestions you have to improve the process of integrating sustainability (economic, environmental, social) within the WMCA and SEP?

A: As long as key roadmap 2020 goals of productivity, carbon reduction and health inequality are kept within key measures these will help deliver a more sustainable direction.

A: The economic modelling used by the WMCA to justify key programmes should be supplement by modules to estimate the carbon/energy impact and health benefits and translate these into economic cost benefits as well.

A: It should be clear in all the SEP priorities how sustainability is built in, rather than just having a separate priority.

Questions and Answers from SWM Board (Continued...)

A: There should be some form of resilience testing of the draft SEP to identify gaps or issues

A: Transport is a key theme as it tackles productivity, air quality, health, and a range of technologies and behaviour change.

A: Any priority on automotive should be mainstream low carbon not niche 'environmental technologies' as any other current automotive technology will be obsolete in 10 years time. There are existing initiatives to build on such as Drive WM.

A: Beyond the WMCA mental health commission – how is wider health inequalities and benefits being built in by Strategic Health bodies?

A: Given the leadership on sustainability varies within other combined authorities – what is the current balance of power in the WMCA between members and officers? and how is the sustainability agenda being supported by both?

A: How are wider networks and stakeholders across WM such as Midlands Engine being engaged? END

West Midlands Combined Authority (WMCA)

Sustainability Support Programme SWM Board Update

21 March 2016

Dr Simon Slater, Associate Director
Sustainability West Midlands
s.slater@swm.org.uk